



FUKUVI
Corporate Brochure.
2023-2030

CREATORS WHO CHANGE LIVES

In a rapidly aging society, facing global environmental challenges, resource and energy constraints, aging infrastructure, and urban development, we must address a multitude of issues to achieve a sustainable society. As members of society and a company specializing in chemistry and resins, what actions can we take? What should we do? This is the central theme of Fukuvi Chemical Industry. Creating and Proposing New Values Through Chemistry.

Our corporate philosophy is rooted in contributing to the community and fostering an environmentally symbiotic society through responsible corporate management. Guided by this philosophy, we have initiated various efforts to tackle the social issues projected for 2030, as outlined by the Sustainable Development Goals (SDGs).

Innovative Solutions for a Sustainable Future

One example is the development of building materials that significantly reduce home energy costs. Additionally, we have established a local production and consumption recycling system that transforms reclaimed wood from local forest thinning into materials for local buildings. We also produce items from recycled materials, such as PVC wallpaper waste, fishing nets and other marine debris.

Dual Approach: Technological Innovation and Mechanism Development

We are committed to creating new social and economic value through a dual approach: technological innovation in chemistry and resins, and the development of business models. As a group of creators dedicated to improving people's lives, we strive to provide values of peace of mind and surprising innovation that are ahead of the times, through dialogue with stakeholders and collaboration with our business partners.

Our Commitment to Positive Change

We will continue to do our best, believing that our efforts will ultimately help transform society, improve people's lives, and gradually make the world a better place.

Chairman and CEO:

Seiichiro Yagi

President and COO:

Katsunori Mori

Vision

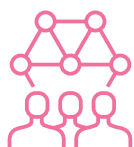
We are committed to delivering innovative solutions that offer peace of mind and set new global standards in an effort to address social challenges and create a more comfortable society by 2030.



Mid-Term Management Plan
<https://www.fukuvi.co.jp/ir/strategy>

Our 2030 Vision

CREATORS WHO CHANGE LIVES



Customers

We are dedicated to proactively advancing into new technological fields.



Society

As a plastics manufacturing company, we are committed to prioritizing environmental symbiosis.



Employees

We are dedicated to enhancing employee satisfaction by continuously reviewing work styles, maximizing individual capabilities, and boosting labor productivity.



Management

To maximize Fukuvi's new growth engine, we will focus on expanding internationally and developing new businesses.

2030 Initiatives

7th Mid-Term Management Plan Slogan

Shaping An Exciting Future Through Extrusion Technology

Expanding Circular Business

Building a Strong Revenue Base

Creating an Organization
That Supports Growth

Business Plan and Basic Strategy

Leveraging our expertise in resin processing, we are broadening our business domains. Through three core strategies, we are committed to creating a sustainable society.



Mid-Term Management Plan
<https://www.fukuvi.co.jp/ir/strategy>



*5R = Reduce, Reuse, Recycle, Renewable, Revalue

Materiality

Leveraging our expertise in resin processing, we are broadening our business domains. Through three core strategies, we are committed to creating a sustainable society.



Mid-Term Management Plan
<https://www.fukuvi.co.jp/ir/strategy>

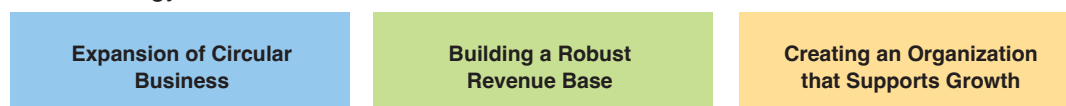
Challenges



Growth Drivers



Basic Strategy



Strengthening Our Management Foundation

To achieve sustainable growth and enhance corporate value, we are committed to reinforcing our management foundation through four strategic approaches.



Mid-Term Management Plan
<https://www.fukuvi.co.jp/ir/strategy>

Sustainability

To enhance both corporate and social value, we are establishing a new organization dedicated to advancing sustainability management and accelerating our initiatives.

FUKUVI DX

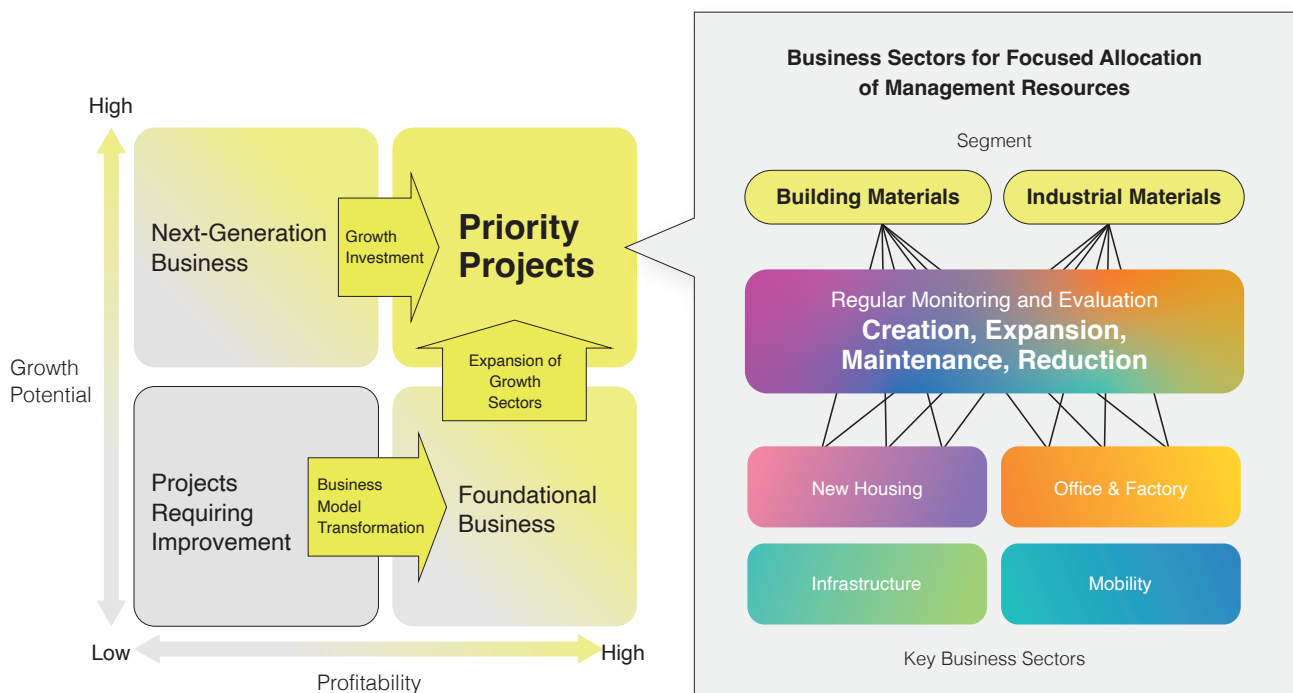
By leveraging data and digital technology across our entire group, we aim to agilely develop innovative products, services, and business models that address social challenges and contribute to a sustainable future.

Human Capital Management

Define the essential skills and competencies needed to align with our corporate strategy, and implement a comprehensive educational system to nurture and develop this talent.

Business Portfolio

We are committed to expanding existing business domains and creating new ventures to establish new revenue streams over the mid to long term.

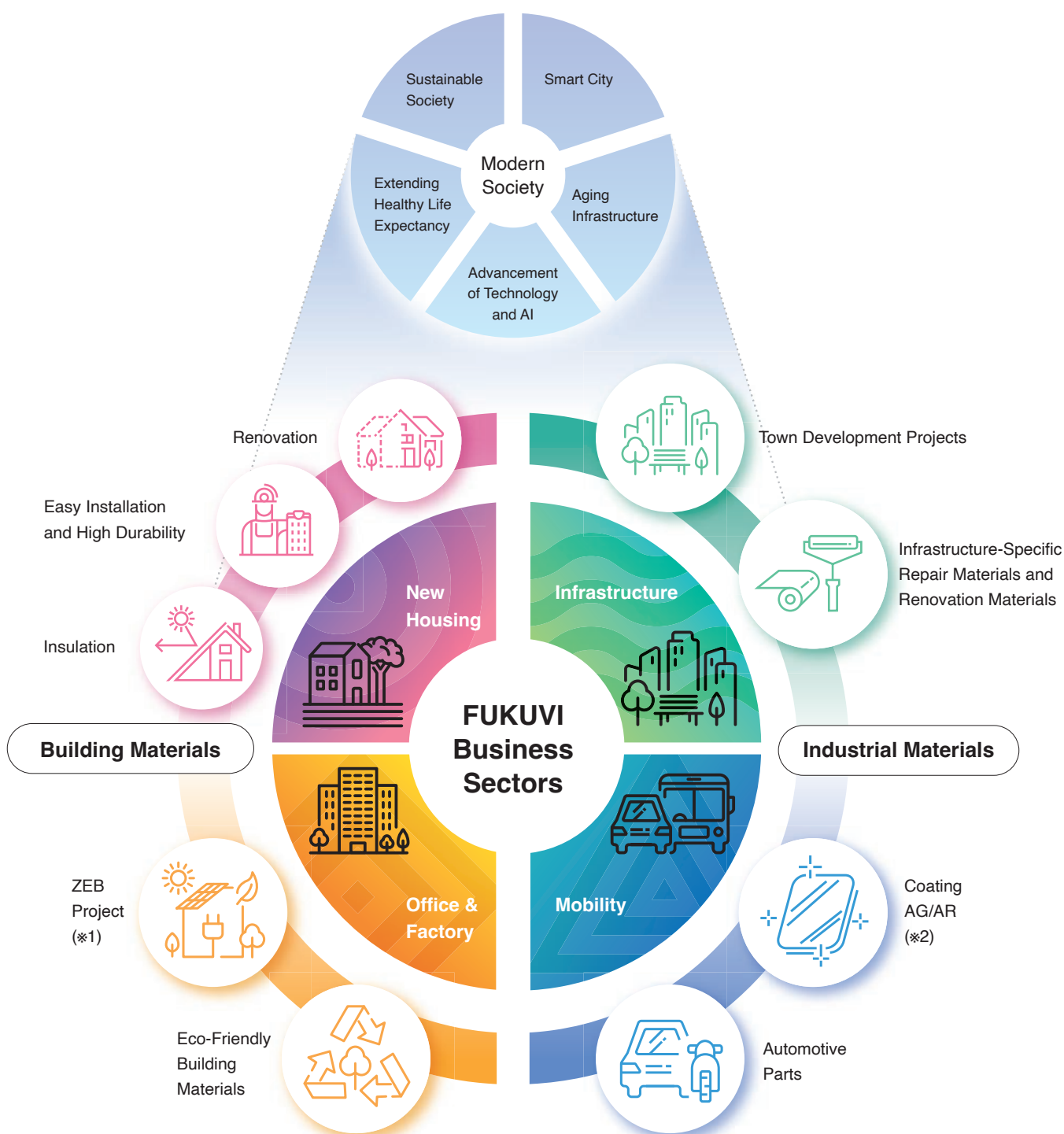


Key Business Sectors

In alignment with our existing segments, we will strategically allocate management resources to four targeted business sectors to drive growth and innovation.



Mid-Term Management Plan
<https://www.fukuvi.co.jp/ir/strategy>



(*1) ZEB: Abbreviation for Net Zero Energy Building, which refers to buildings designed to produce as much energy as they consume, achieving a net zero energy balance.

(*2) AG: Abbreviation for Anti-Glare. Scattered reflection. AR: Abbreviation for Anti-Reflection. Low reflection.

Business Sector-1 New Housing Solutions

Fukuvi is dedicated to exploring the potential of resin to create value that enhances housing and daily life. In recent years, we have concentrated on developing eco-friendly products that promote energy efficiency, high durability, and improved workability, all aimed at achieving a sustainable, recycling-oriented society.



For a Safe, Secure, and Comfortable Living Environment

Through our commitment to energy-efficient housing, we help reduce life cycle costs, including utility expenses. We aim to create new homes that enhance the health and longevity of residents, ensuring safe, secure, and comfortable living environments.



- Industry-leading high insulation performance: Phenovaboard
- Natural design simulating natural wood: SOLA-IE Deck
- Durable and waterproof resin opening frame: Resin Opening Frame UB Frame

Utilizing Our Core Technology of "Profile Extrusion Molding"

We listen to feedback from construction site professionals, such as builders, and incorporate it into our product planning. By leveraging various resin processing technologies, including profile extrusion molding, we provide a diverse range of products that excel in workability.



- Prevents tearing of wallpaper and preserves aesthetics: Wallpaper Trim
- Superior design and workability in thermal insulation composite panels: Bath Panel
- Prevents water ingress and related problems: WeatherTight

Eco-Friendly Product Brand "Fukuvalue"

Fukuvi's technological expertise has led to the creation of a new brand focused on the circular economy, featuring monomaterialization of materials, biomass materials, and waste recycling.



- Eco-friendly insulation made from paper and corn starch: Fukufoam Eco
- Enhanced performance roofing battens made from recycled plastic waste: Eco Lumber
- Granular anti-termite material utilizing factory waste glass: Aridan Crystal

Recommended brands
in this category



Business Sector-2

Office & Factory Solutions

Fukuvi is committed to developing innovative solutions that address modern challenges in the non-residential sector. For example, building materials that reduce energy consumption and support Zero Energy Building (ZEB) conversion, as well as products that ensure advanced sanitary and safety environments.



Sub-Brand for Factory Hygiene/ Sanitation Products: "PLANTOOL"

Prioritizing hygiene/sanitation and safety in food factories and similar settings, this brand is dedicated to these goals. Our product lineup focuses on three key areas: hygiene considerations, degradation/damage protection, and condensation prevention.



- Cart guard with impact absorption for low-temperature environments: Protect Line
- Hygienic and easy-to-clean resin coving/baseboard: Clean Line
- Coving for flooring in food factories, clean rooms, etc.: Solid Line

For Building Sustainable Offices

We are developing products that cater to the design needs for wood-based products by fundamentally re-evaluating product design and materials, including the use of wood plastic composite material "Pluswood" made from thinned wood from various regions around the country.



- Recycled wood that can sequester CO₂: Pluswood Louver
- Dry double floor made from recycled fishing nets: Eco-Friendly Dry Double Floor Free Floor
- Raised access flooring utilizing factory waste materials: Clean OA Floor TN

Lighter and Easier-To-Install Building Materials Through Resinification

Lightweight, strong, and highly durable. Available in various colors and shapes, and recyclable... We develop a range of products that leverage these resin characteristics, providing them to logistics warehouses, factories, and more.



- Visibility material to prevent forklift wall collisions: Plastic Forklift Guard
- Metallic texture: Commercial refrigerator parts (metallic extrusion molding)

Recommended brands
in this category

PLANTOOL

PLUSWOOD

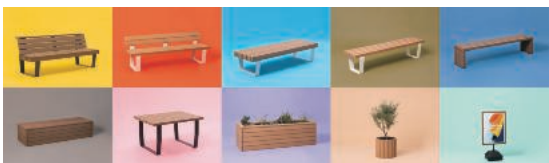
Plastic Forklift Guard



Pr
bu
be



- Eco-friendly WPC material from thinned timber: Pluswood
- Sustainable WPC material using Tokyo Tama Timber: Pluswood-TM

C
be
en

- Fostering closer connections between people and the city: FANDALINE

W
tra
du
su

- Thermosetting Carbon Fiber Reinforced Polymer: CFRP
- Thermoplastic Carbon Fiber Reinforced Polymer: CFRT

Recommended brands in this category



Fandaline
Fukuvi Public Furniture

CFRP 炭素繊維複合材
タフシット
toughsite

Business Sector-4

Mobility Solutions

Fukuvi's technology spans industrial materials for automobiles, trains, home appliances, and information communication devices. Our products, leveraging advanced resin molding and special coating technologies, are utilized in interior components, insulation panels, meter panels, etc.



Revolutionizing Manufacturing with Fukuvi's Advanced Resin Technology

Fukuvi is a global leader in profile extrusion molding. We offer comprehensive solution services, supporting our customers' innovation and value creation from material development to final molding.



- Cooling ducts for commercial buses
- Lighting covers for trains and buses
- Aerodynamic spoilers
- Insulation panels for refrigerated trucks

Advanced Thin Film Coating Technology: "HARZLAS"

Resin panels enhanced with advanced coating technology. Extensively used in automotive meter panels, protective display panels for medical monitors, camera covers for smartphones, etc.



- Crystal clear visibility! High transparency, low-reflection panel that reduces eye strain: HARZLAS AR

Automotive Illumination Components

The Light Guiding Bar is an illumination component that channels LED light through transparent resin. It is versatile and can be used in automotive lighting, home appliances, robotics, and building materials.



- Achieve stunning and sophisticated lighting effects: Light Guiding Bar

Recommended brands
in this category

FUKUVI
HARZLAS

Light Guiding Bar

Collaboration

Leveraging Fukuvi's diverse technological platform, we collaborate with customers, business partners, research institutions, and various organizations to drive new value creation.



Products
<https://www.fukuvi.co.jp/product>

Fukui WOOD Biomass Center

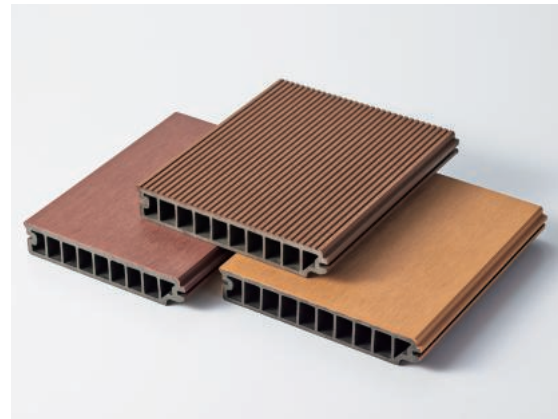
PLUSWOOD



In partnership with local forestry cooperatives, our biomass center produces wood powder and resin pellets from thinned timber obtained during forest maintenance (forest thinning). These materials are used as raw ingredients for the wood-plastic building material "Pluswood".
※Recipient of the 2016 Good Design Award

Local Use of Thinned Timber - Wood Plastic Composite Incorporating Tama Timber

PLUSWOOD-TM



Expanding our range, Pluswood now incorporates Tama timber from Tokyo alongside Fukui prefecture's thinned timber. By utilizing local thinned timber, we contribute to CO₂ sequestration, forest maintenance, and the revitalization of local industries.

Non-Combustible Handmade Japanese Washi Paper Decorative Panel

Koshu



Utilizing handmade Echizen Japanese washi paper from Sugihara Shoten Co., Ltd. (Fukui Prefecture), we have created non-combustible decorative panels through advanced resin technology. These panels are attracting attention for their ability to maintain the allure of Japanese washi paper even in environments exposed to outdoor air and high humidity.
※Recipient of the 2019 Good Design Award

Floor Impact Sound Reduction Material

SILENT DROP



Developed in partnership with a construction company, our impact sound reduction material uses recycled resin as its primary component. Lightweight and easy to install by simply placing it into the ceiling, it offers outstanding performance. It is widely used in apartment and hospital facility renovations.

Sustainability

Creating New Value Through Chemistry and Addressing Social Challenges Through Business. At Fukuvi, we set ambitious goals that only we can achieve, steadily advancing towards a sustainable society, step by step.



Sustainability
<https://www.fukuvi.co.jp/sustainability>

Key Focus Area (2030 Goals)

Providing a Safe, Secure, and Comfortable Living Environment



KGI Advancing the Development of Products to Ensure Safety, Security, and Comfort

- KPI**
- Promoting the development of safe and secure residential environments and public spaces.
 - Promoting the creation of solutions that ensure safety and security in the context of climate change and environmental sustainability.
 - Promoting the development of products tailored for the elderly and children.

Indicator
 Cumulative Total
50 Cases

Technological Innovation



KGI Promotion of Resource Circulation

KPI Reduction of Industrial Waste

Indicator **50** % Reduction (Compared to 2019)

KPI Reduction of CO₂ Emissions

Indicator **30** % Reduction (Compared to 2019)

Providing Meaningful and Fulfilling Work



KGI Improving Employee Engagement

KPI Human Resource Development and Activation

Indicator **20** %
 Ratio of Female Managers

KPI Promoting Flexible Work Styles

Indicator **50** %
 Remote Work Utilization Rate
 Paternity Leave Utilization Rate

Partnerships and Alliances



KGI Creating Value Through Partnerships

KPI Collaboration and Partnership with Industry, Government, Academia, and Financial Institutions

Indicator **25** Projects
 Number of SDGs Collaborative Projects

SDGs Declaration

The Fukuvi Group, guided by our corporate philosophy of "Creating and Proposing New Value Through Chemistry" and "Contributing to the Community and Forming an Environmentally Symbiotic Society Through Corporate Management," is committed to pursuing stakeholder happiness and contributing to solving social issues to achieve the SDGs.



Sustainable Products: Fukuvalue

Fukuvi has introduced "Fukuvalue", an in-house certification system for environmentally conscious products, aimed at practicing revaluation (Revalue). Products that meet the certification criteria are awarded this mark, emphasizing the belief that everything is a resource and strengthening the creation of new value.



Manufacturing Linked to Recycling

We recognize that the true value of our products extends beyond their initial use. To benefit both our customers and the environment, we are committed to designing and developing products that are easy to disassemble and recycle, using single materials wherever possible.

Manufacturing Using Biomass Materials

By combining natural materials with Fukuvi's unique technology, such as "Pluswood" and "Fukufoam Eco," we continue to innovate and create products with new perspectives.

Pursuing "Reduction" Through Innovative Product Design

Our commitment is to develop products that minimize impact on both the environment and our customers. By continuously refining our product designs and material choices, we strive to create sustainable solutions. We are dedicated to daily research focused on enhancing material efficiency and extending the lifespan of our products.

Creating New Value from Waste

At Fukuvi, we transform waste by repurposing it in innovative ways beyond its original use. We refer to this as the fifth R, 'Revalue,' complementing the traditional 4 Rs. Our team is dedicated to actively pursuing product development with this principle in mind.

Keeping Our Planet in Focus





Fukuvalue
<https://fukuvalue.jp/>

Fukuvalue Certified Products



Recycled Marine Plastic Dry Double Floor



Eco-Friendly Double Floor

We have upcycled nylon resin (REAMIDE®) sourced from recycled waste fishing nets, into support leg bolts for dry double-floor systems. Our product lineup includes innovative designs that integrate multiple components, ensuring easy separation and recycling. In comparison to our traditional steel support legs, we have achieved a reduction in CO₂ emissions of approximately 44.4 to 60.1%.

Recycled Waste Glass Granular Anti-Termite Material



Aridan Crystal

We repurpose waste glass from home appliance manufacturing into granules used in house foundations to prevent termite intrusion. The glass material is resistant to termites—they cannot move, chew, or penetrate it—providing long-term protection. This chemical-free method ensures safety for both humans and the environment.

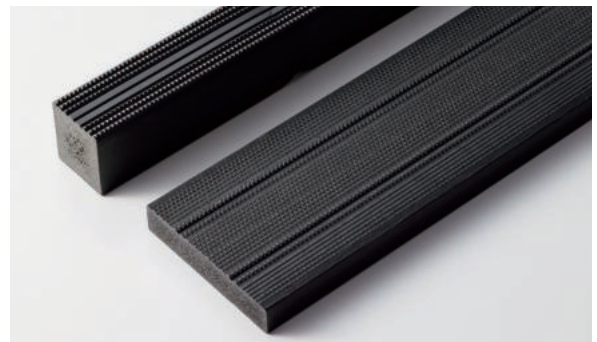
Eco-Friendly Insulation Combines Paper and Cornstarch



Fukufoam Eco

To reduce plastic usage, we blend industrial waste paper from the papermaking process, corn-based starch (cornstarch), and recycled plastic. Using steam foaming technology without foaming agents, we ensure long-term insulation performance. Additionally, by incorporating wood-based materials (paper), this product helps with CO₂ reduction efforts.

Recycled Plastic Waste Roof Battens

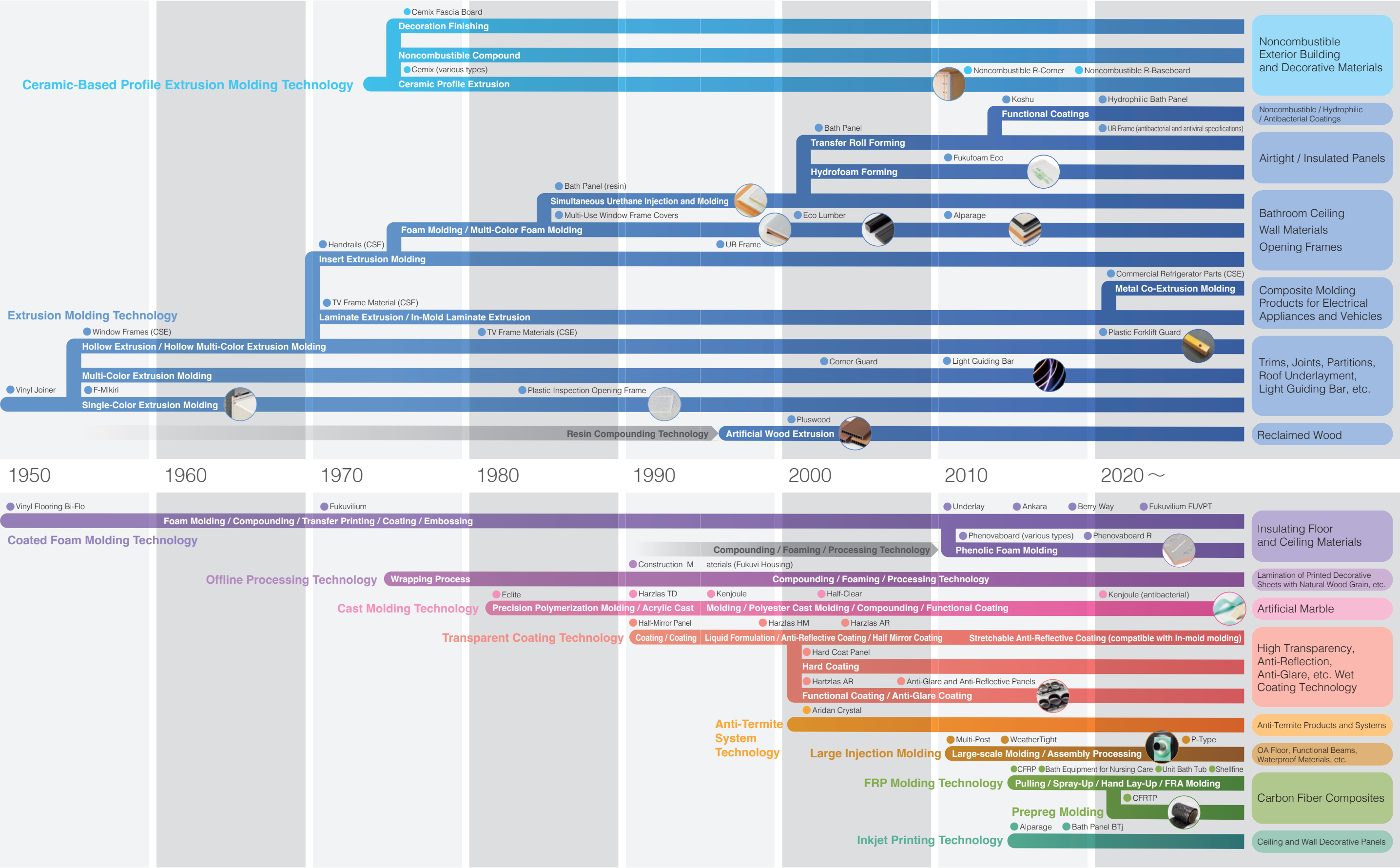


Eco Lumber Battens for Roofing

This recycled product is made from 100% waste materials generated during the manufacturing process of food containers, enhanced with our unique formulation. By replacing wooden roof battens, which are prone to decay from rainwater, with plastic, we have extended the batten installation lifespan. The plastic roof battens maintain performance when compared to wood in terms of workability and nail retention. Additionally, the use of a single material during manufacturing makes them easier to recycle.

Technology and Product History

Fukuvi started out in the 1950s by manufacturing building materials through extrusion molding and coating foam molding. Since then, we have accumulated know-how in various resin processing and resin compounding techniques, and through repeated innovation, have developed a wide range of products.



Financial Highlights

EOFY 03/2025



Company Profile
<https://www.fukuvi.co.jp/company/about>

Sales

39,973 M (JP¥)

Operating Profit

1,550 M (JP¥)

Ordinary Profit

1,882 M (JP¥)

Net Income Attributable to
Parent Company Shareholders

1,466 M (JP¥)

ROIC (Return on Invested Capital)

3.8 %

ROE (Return on Equity)

4.0 %

D/E ratio

0.030 x

Equity Ratio

68.7 %

Company Profile

From Fukui to the World - Building a Global Supply Chain.



Company Profile
<https://www.fukuvi.co.jp/company/about>

Locations

Head Office / Factory

Head Office / Head Factory
Sakai Factory
Mikata Factory
Awara Biomass Plant
Gifu Processing Center

Branches / Sales Offices / Branch Office

Sapporo Sales Office
Mertzen Sales Office
Morioka Sales Office
Sendai Sales Office
Tokyo Branch
Niigata Sales Office
Utsunomiya Sales Office
North Kanto Sales Office
Kanagawa Sales Office
Chiba Sales Office
Osaka Branch
Nagoya Branch
Shizuoka Sales Office
Hokuriku Sales Office
Okayama Sales Office
Hiroshima Sales Office
Fukuoka Branch
Kagoshima Sales Office
Okinawa Branch Office

Distribution Management Center

East Japan Distribution Center
Hokkaido Distribution Center
Tohoku Distribution Center
West Japan Distribution Center
Chugoku Distribution Center

Consolidated Subsidiaries (Japan)

Refojoule Corporation
Fukuvi Housing Corporation
Alice Chemical Corporation
Fukuvi Okayama Co.

Consolidated Subsidiaries (Overseas)

FUKUVI USA INC
FUKUVI VIETNAM CO., LTD.
FUKUVI HOLDINGS (THAILAND) CO., LTD.
FUKUVI (THAILAND) CO., LTD.

Corporate Information



Company Name	Fukuvi Chemical Industry Co., Ltd.
Address	33-66 Sanjuhassha-cho, Fukui City, Fukui Prefecture, Japan 918-8585
Established	May 25, 1953
Paid-In Capital	2193.9M (JP¥)
Representative	Chairman and CEO: Seiichiro Yagi President and COO: Katsunori Mori
Employees	983 - Consolidated 755 - Parent Company (EOFY 03/2025)
Banking Partners	Fukui Bank Head Office Hokuriku Bank Fukui Branch Sumitomo Mitsui Banking Corporation Fukui Branch Hokkoku Bank Fukui Branch Shoko Chukin Bank Fukui Branch Mizuho Bank Fukui Branch Sumitomo Mitsui Trust Bank Kanazawa Central Branch

FUKUVI 